



# User Guide

*Recipe Creation and Modification*



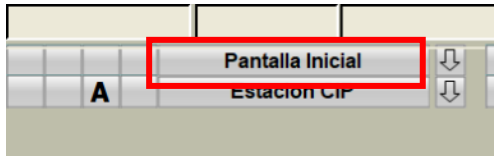
# Content

- 1 Open recipe configurator ..... 2
  - 1.1 Open "Configurator" ..... 2
  - 1.2 Sign in..... 2
- 2 Moficar Recipe ..... 3
  - 2.1 Select recipe..... 3
  - 2.2 Change/Add/Delete Step..... 3
  - 2.3 Modifying a parameter ..... 4
- 3 Create Recipe ..... 5
  - 3.1 Step 1 Copy from existing recipe ..... 5
  - 3.2 Step 2 Enter new prescription number..... 5
  - 3.3 Step 3 rename new recipe ..... 6
- 4 Remove Recipe..... 7

# 1 Open recipe configurator

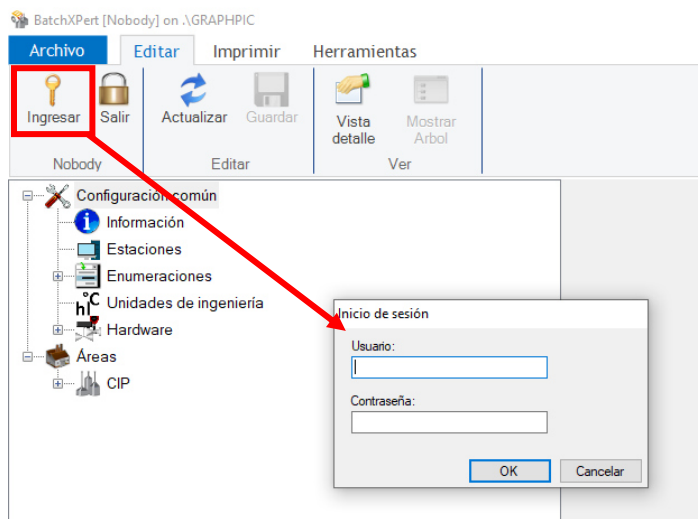
## 1.1 Open "Configurator"

In the "Initial screen" of the system "BatchXpert", in the bottom menu click on "settings".



## 1.2 Sign in

Click "Enter" and the login window will be displayed.



the system master key is as follows (capitalization must be resperated )

User: Admin

Key: MLogics

## 2 Moficar Recipe

Modify recipes from the recipe configurator once the key is entered.

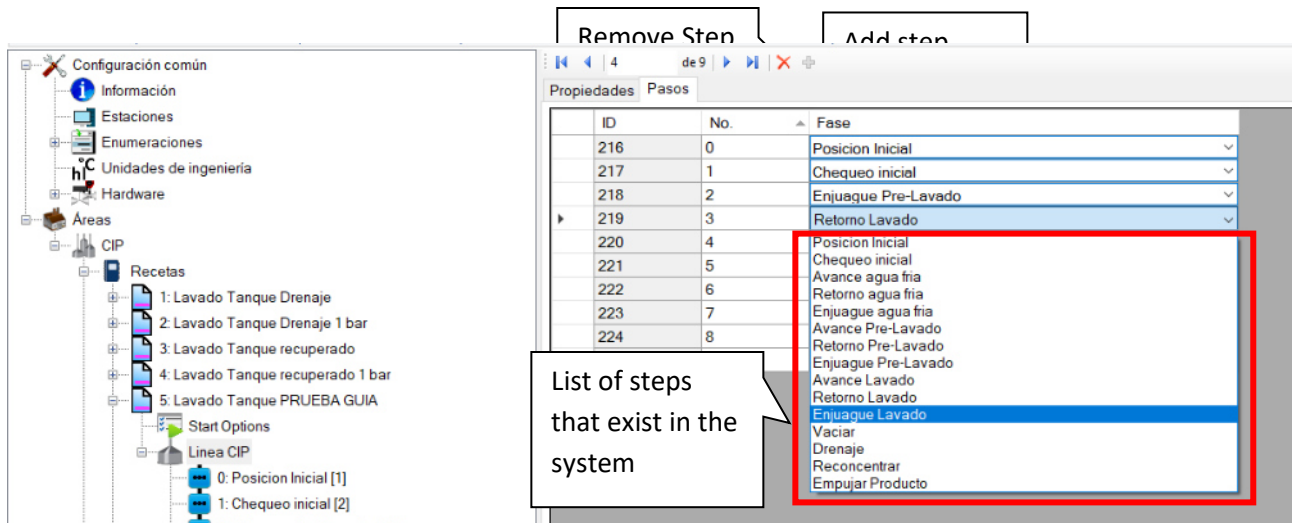
### 2.1 Select recipe

You must select the recipe you want to modify



### 2.2 Change/Add/Delete Step

Click on the "Steps" tab. The step must be selected and then the modifications made.



ID	No.	Fase
216	0	Posicion Inicial
217	1	Chequeo inicial
218	2	Enjuague Pre-Lavado
219	3	Retorno Lavado
220	4	Posicion Inicial
221	5	Chequeo inicial
222	6	Avance agua fria
223	7	Retorno agua fria
224	8	Enjuague agua fria
		Avance Pre-Lavado
		Retorno Pre-Lavado
		Enjuague Pre-Lavado
		Avance Lavado
		Retorno Lavado
		Enjuague Lavado
		Vaciar
		Drenaje
		Reconcentrar
		Empujar Producto

## 2.3 Modifying a parameter

You need to select the recipe and then look for the step where you need to change the parameter.

Example:

- I need to increase the washing time with soda from 3 min to 5 min.
- I need to increase the feed pressure in soda washing from 0.5 bar to 2.5 bar

The screenshot displays a software interface for recipe configuration. The left sidebar shows a tree view with 'Recetas' expanded to 'Linea CIP' and step '4. Enjuague Lavado [23]' selected. The main panel shows a 'Parameters' table with various settings. Two callout boxes highlight specific changes:

- Callout 1: "Time in Seconds. Change from 180 to" (pointing to parameter 2, 'Tiempo pulso', value 180).
- Callout 2: "Change from 0.5 to 2.5 bar" (pointing to parameter 34, 'Presion', value 0.5).

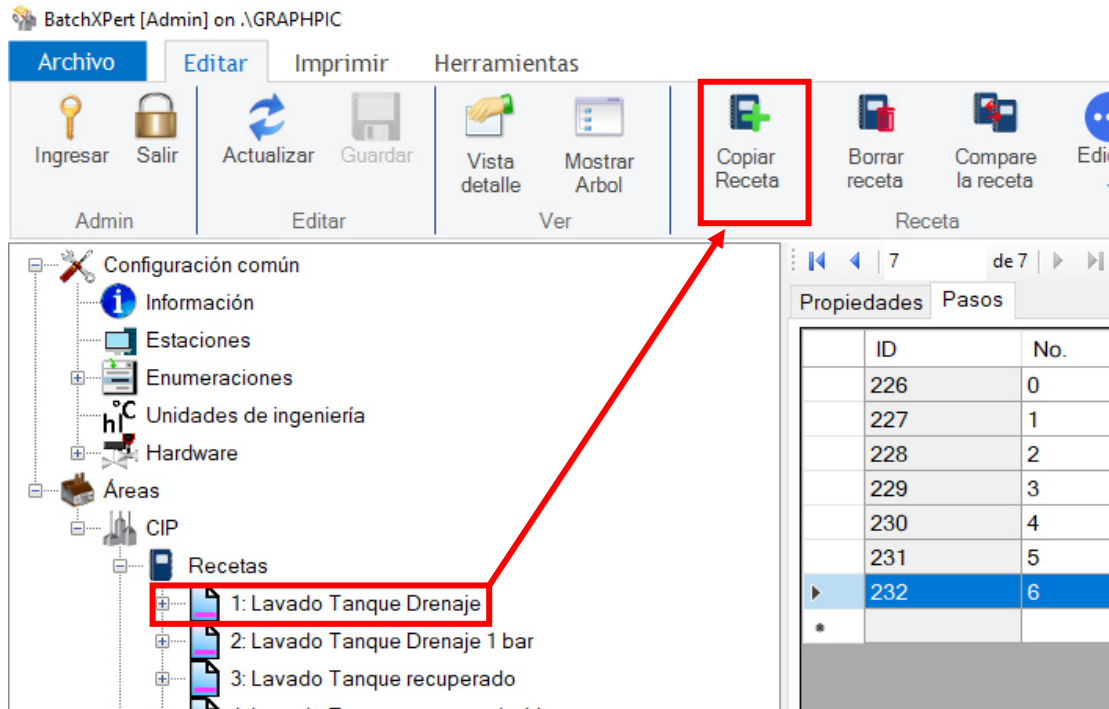
ID	Parameter Name	Value	Unit
1	Tiempo de Supervision	5	
2	Tiempo pulso	180	sec
3	Tiempo pausa	0	sec
4	Atraso Alarma	60	sec
29	intervalos	1	No
30	Temperatura retorno min	-999	°C
31	Temperatura retorno max	999	°C
32	Conductividad min	-999	
33	Conductividad max	999	
34	Presion	0.5	bar
35	Velocidad Bomba	0	%
37	Retorno CIP	TK Lavado	enumeración

### 3 Create Recipe

The easiest way to create a new recipe is by copying an existing one that is similar to the new process.

#### 3.1 Step 1 Copy from existing recipe

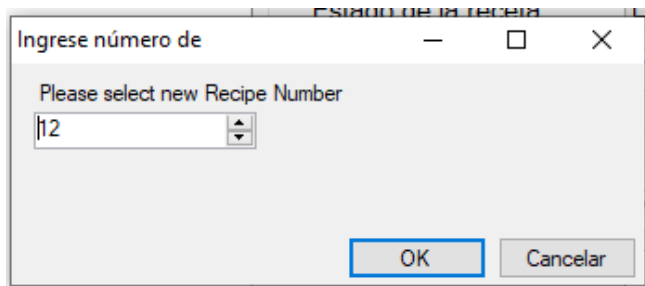
You must select the existing recipe you want to copy and then click "Copy Recipe"



#### 3.2 Step 2 Enter new prescription number

Then you need to enter prescription number. The following order is defined in plant to avoid mixtures of recipes between ponds and freezer:

- Recipes from 1 to 9 reserved for pond toilets
- Recipes 10 to 19 reserved for Frieza toilets
- Recipes 20 to 29 Reserved for production procedures



### 3.3 Step 3 rename new recipe

We select the new recipe and proceed to edit the name.

The name must be copied to all 3 languages

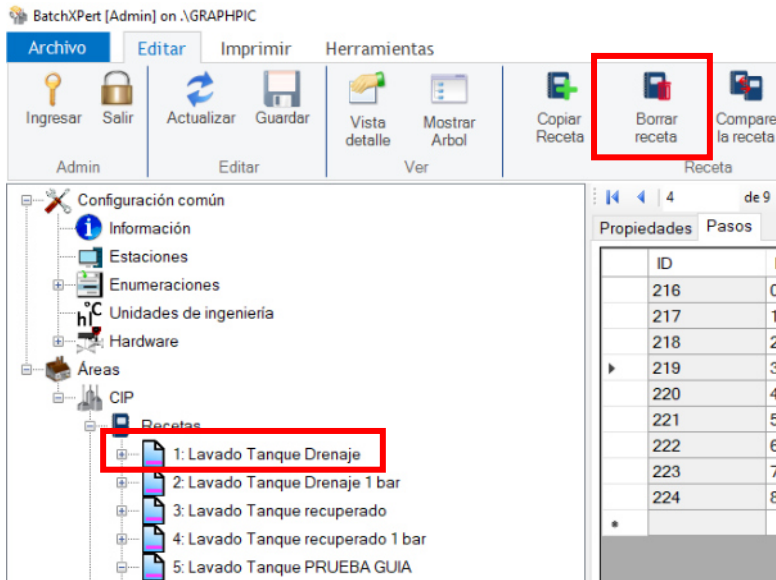
Add a related comment to the new recipe

To edit the steps and/or parameters of the new recipe go to Item "Modify Recipe".

## 4 Remove Recipe

When you delete a recipe it was no longer available to run or restore it, so you must perform this action with the certainty that you do not need to run the recipe again.

You must select the recipe you want to remove and then press the "delete recipe" button



Before deleting, a recipe removal confirmation window will appear. Must be confirmed in "Yes"

