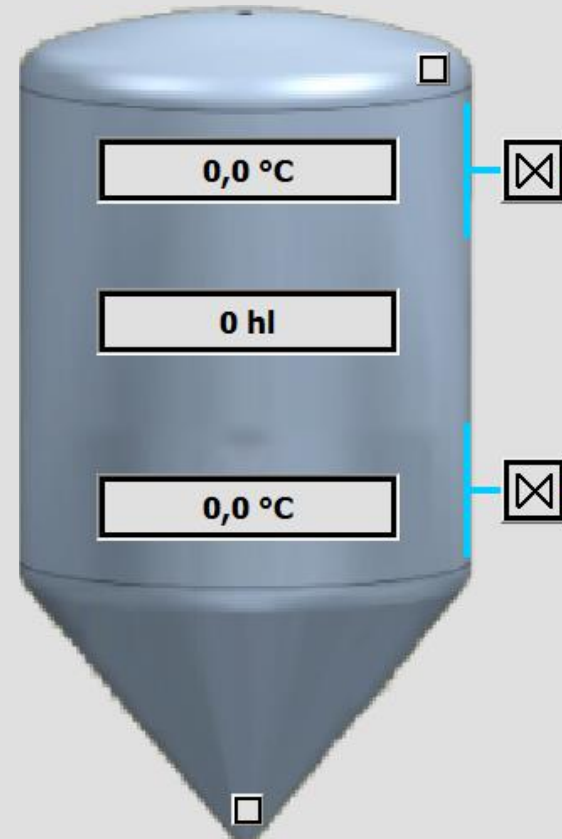


Tank Control with



Advantages of the BatchXpert system

Control of temperatures, levels, pressure, etc. through recipes that allow management and control of volume or product mixtures.

Monitoring of temperatures, levels, pressure, etc. with alarms

Monitoring and totalization of products or mixtures for product with management and traceability (Depending on availability of plant instrumentation)

Recipes for different types of products or mixtures

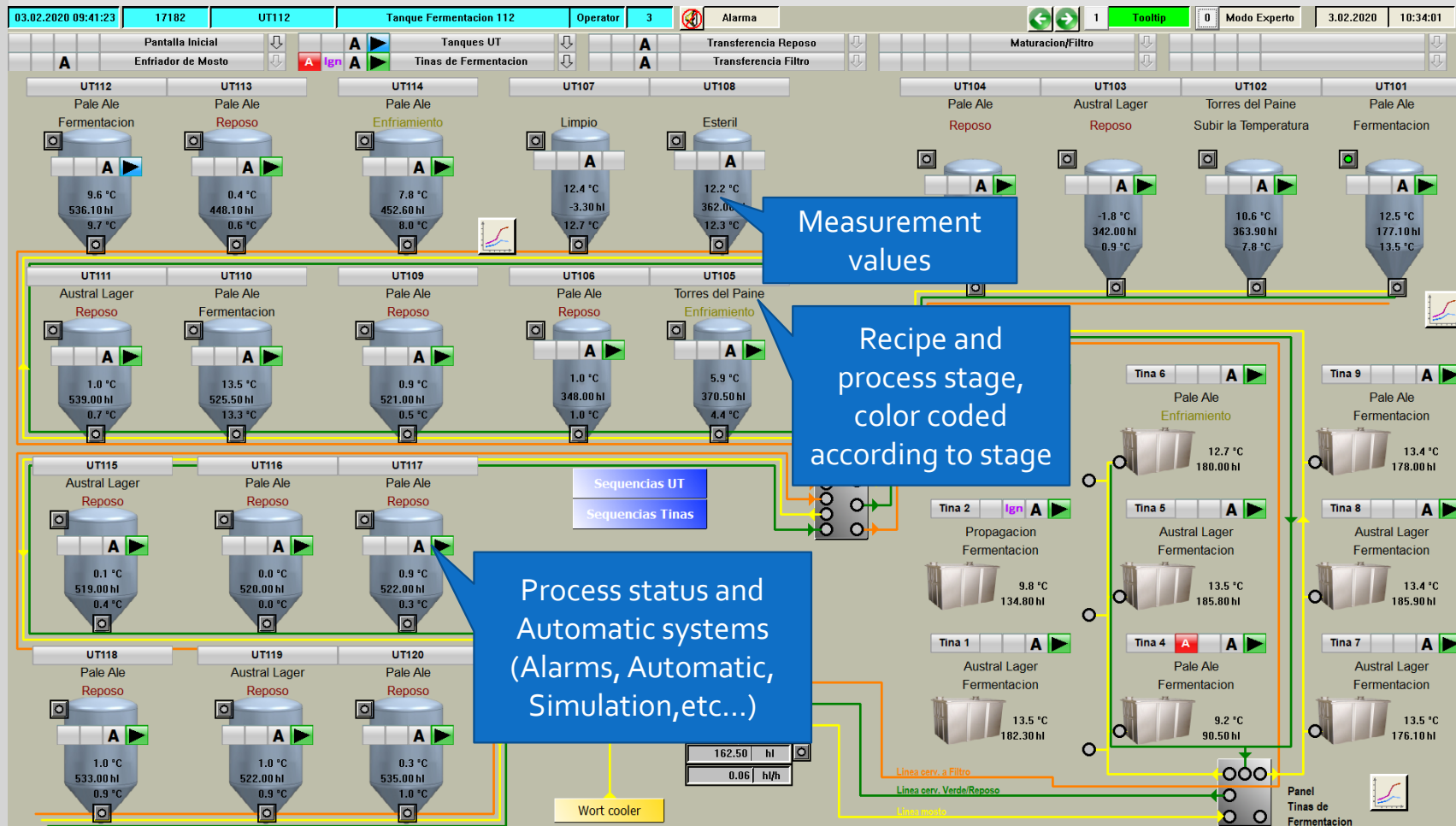
Generation of automatic reports, trending and recording of manual interventions

Recording of manual measured values such as "Apparent Extract" etc., such as trends and reports

Tank Cleanliness and Hygiene Status Record

Traceability of each batch. Which Cooking Plants Went To Which Fermentation Tank, etc...

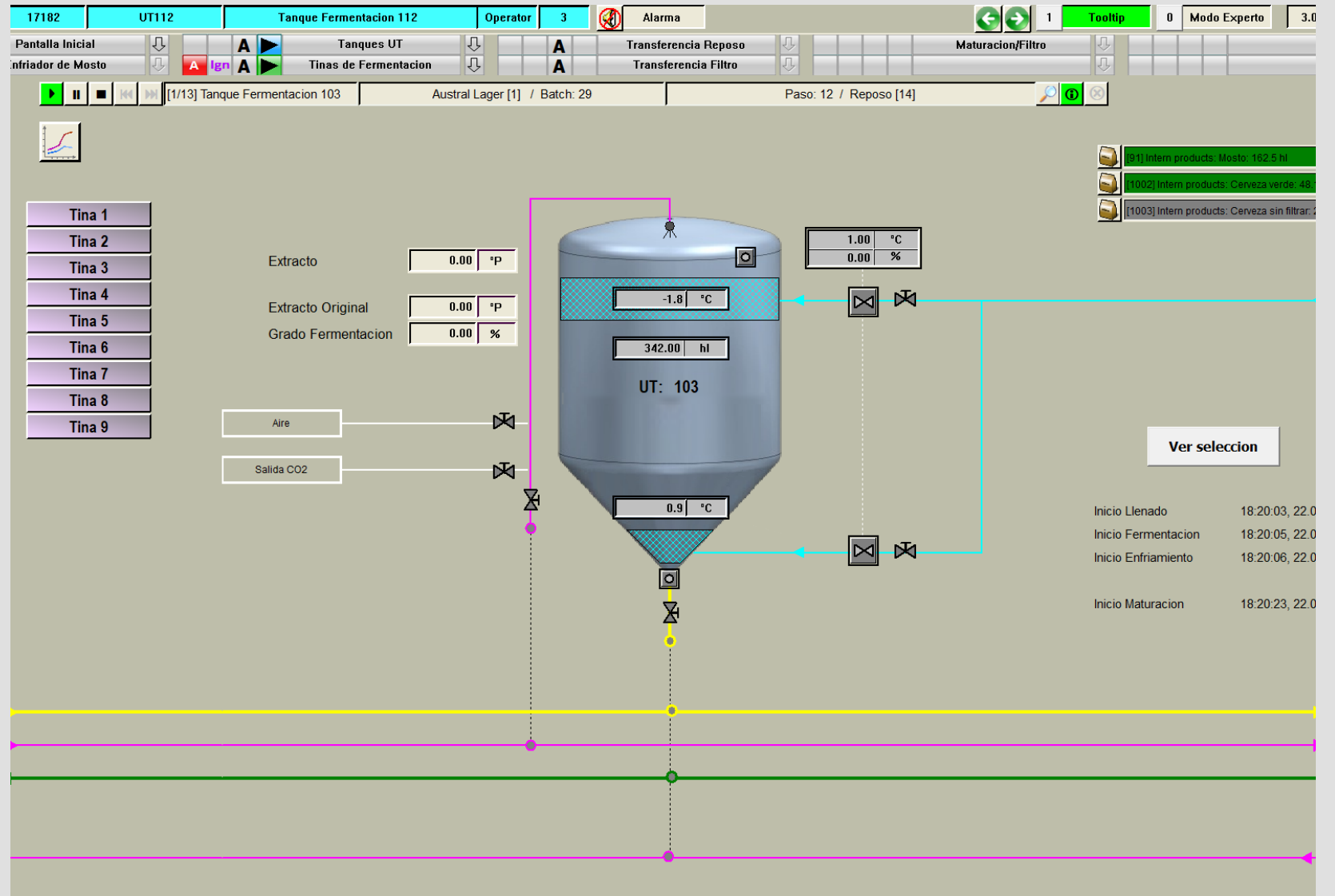
Overview of the status, content and process stage of each tank. This makes it easy to plan operations and view availabilities



Global visualization of fermentation processes

Detailed visualization of each pond

- Possibility of performing manual actions.
- Possibility of entering measured values manually.
- Possibility of entering the apparent extract and generating Fermentation curve
- Automatic calculation of the Degree of Fermentation
- Review possible failures.
- Modify parameters according to operational level



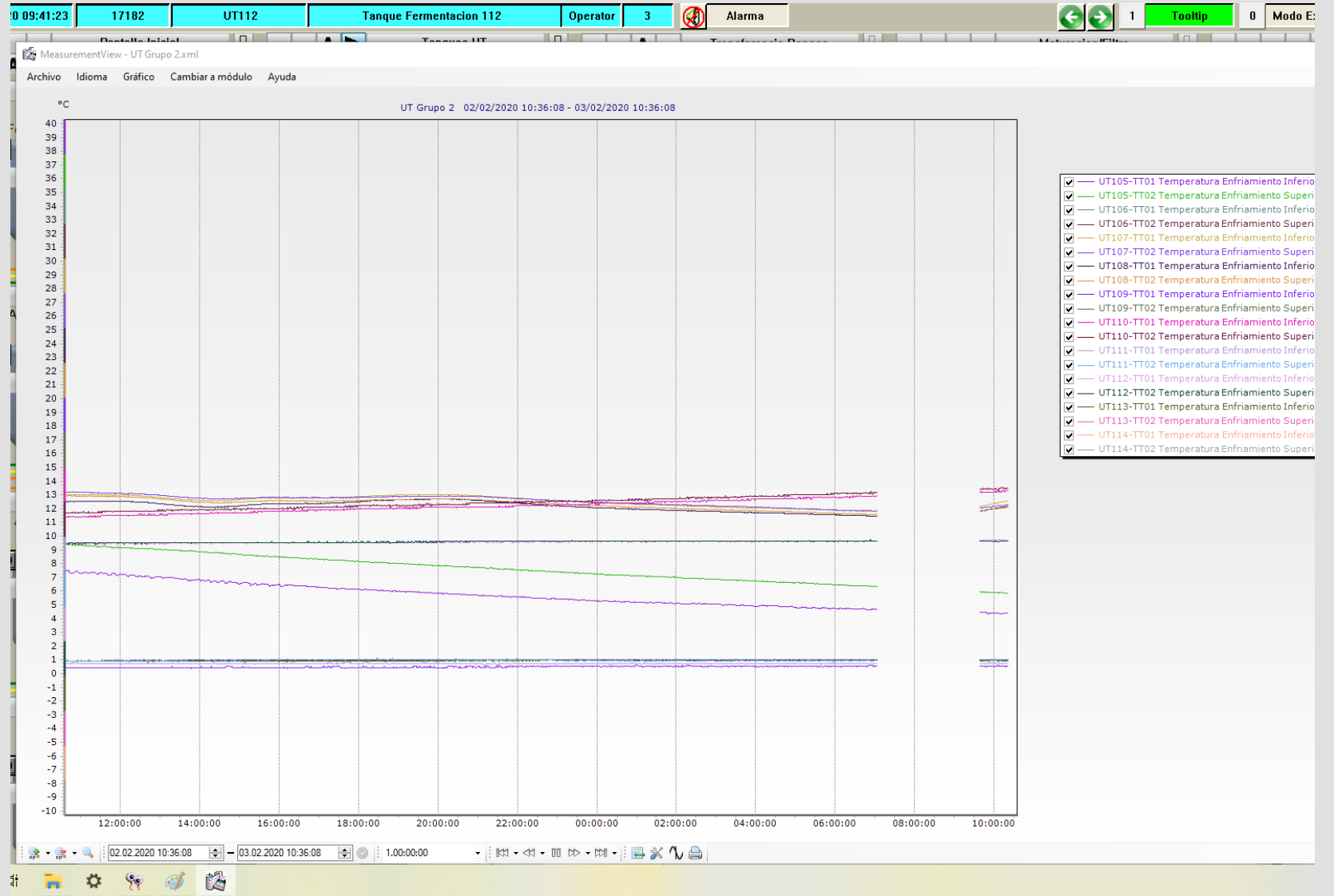
Measurement history

Temperatures

Degree of fermentation

Apparent Extract

Totalizers



Recipe Settings

Recipes for each type of product

Adjustment of nominal values for each batch or product

Standardized step sequences for all fermentation tanks

Recipe Step	Setpoint	UoM	Limit
Start Master			
Malt Transport			
Wet Mill			
Start Position			
Start Check			
Set Unit Status			
Filling			
Start Mash Tun			
Pre Steeping			
Watchdog	5	min	0 - 9999
temp. steeping water	66	°C	0 - 9999
flow steeping water	30	hl/h	0 - 9999
quantity water	1	hl	0 - 9999
Startup Rollers			
Milling			
Milling Postrun			
Flushing			
Transfer Postrun			
Drain			
Mash Tun			
Lauter Tun			
WHP Kettle			

Batch Reports

Information on the complete fermentation process

Notifications for manual operations

Recording of manual values, gauges and totalizers

Flexible Configuration

The screenshot displays the BatchXpert Report Viewer application window. The interface includes a menu bar (File, Batch Report, Manual Operations, Batch Summary, Batch Trace), a toolbar with icons for Refresh, Data, Filter, Report Template, and Print, and a file list on the left. The main content area shows a detailed 'Batch Summary' report for 'Production.rtf'. The report includes the following information:

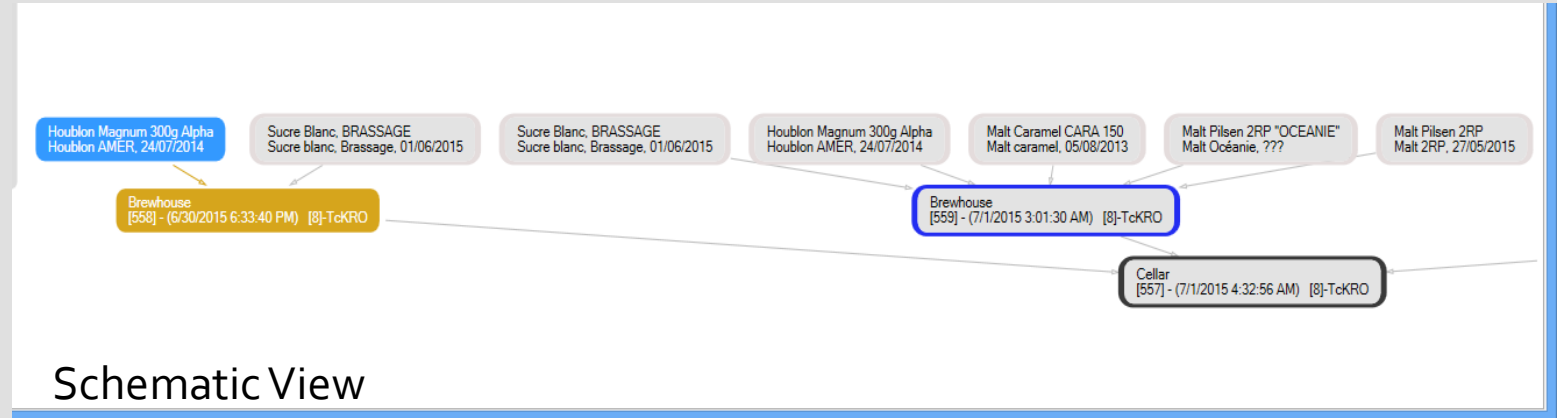
- Batch No:** 22
- Date:** 08-07-2015 3:08:38
- Brand:** TcKRO
- Raw material:** Manual Intervention
 - Start transport: 03:08:42
 - Duration Transport: 00:36:23
- Milling:** Manual Intervention
 - Start Milling: 12:10:43
 - Duration Milling: 00:31:30
 - Quantity Water: 40,42 hl
- Mashing:**
 - Start mashtun: 12:08:30
 - Duration mashing: 01:48:54
 - 1. Rest time: The Step event could not be found
 - 1. Rest temperature: The Step event could not be found F (The Step event could not be found)
 - 2. Rest time: The Step event could not be found
 - 2. Rest temperature: The Step event could not be found

Batch Traceability

Source and destination information for each Batch

Raw material information for each batch

Batch traceability from
Brewhouse,
Fermentation, Cellar,
Packaging (Depending on
plant availability)



Schematic View

Tabular View Graphical View

Inbound Transfers

Source	Material	Amount	Start Time	End Time
Batch				
[545] - (6/28/2015 9:10:36 ...	Intern products: Green Beer	171.992	7/3/2015 2:...	7/3/2015 ...
POLYCLAR 10				
Polyclar 10, 20/03/2015	POLYCLAR 10: Polyclar 10, ...	0.7425...	7/3/2015 2:...	7/3/2015 ...

Selected Batch

[531536] - (7/3/2015 2:17:19 PM) [8]-TcKRO Detail

Outbound Transfers

Destination	Material	Amount	Start Time	End Time
Batch				
[536] - (7/3/2015 2:17:55 P...	Intern products: Green Beer	171.995	7/3/2015 2:...	7/3/2015 ...

Tabular View

Thank you so much!

Info@MLogics.cl



MLogics Chile Ltda.

Las Palmeras 500
Penaflor
Santiago

MLogics SRL Uruguay

Mirsoles M.127 S.21
Solymar Mountains
Montevideo