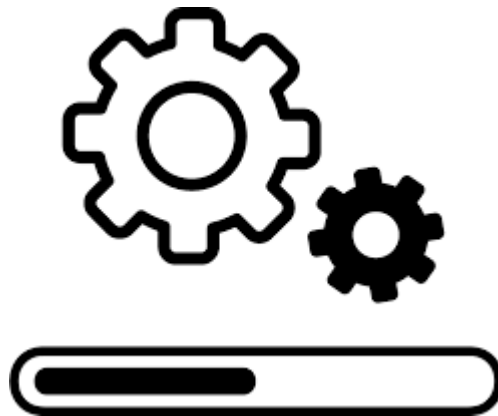




Installation



Content

1	General	2
2	Requirements	3
3	Installing SQL Server	4
4	Installation of the "VisXpert" SCADA system	5
5	Install the BatchXpert	6
6	Adjust VisXpert Language	7
7	Install the license	8
8	Install the project files	10
9	Settings in Windows	11
9.1	Change Desktop Background	11
9.2	Create and Adjust System User	12
9.2.1	Create new user account	12
9.2.2	Change your initial account	16
9.2.3	Set Account to Automatically Log in to Windows	18
9.3	Turn off Windows Sharing Restrictions for user "without" password	19
10	Adjust "power management" settings	20

1 General

Installing the BatchXpert system consists of four main steps:

1. Installing the SQL Database
2. Installation of the "VisXpert" SCADA system.
3. Installation of the "BatchXpert" Process Management System from MLogics.
4. Installation of the Project that includes the SCADA images and the database for the configuration of the plant.

All files required for the BatchXpert system are automatically downloaded from the web installer available on the MLogics homepage in the "Member Download" area from the following link:

[http://www.mlogics-automation.com/MLogics/Install% 20Center/BatchXpert% 20Installation% 20Center.exe](http://www.mlogics-automation.com/MLogics/Install%20Center/BatchXpert%20Installation%20Center.exe)



After starting the Web installer, please follow the installers' instructions and install the four BatchXpert components (SQL-Server, VisXpert, GOPS PLC Controller and BatchXpert)

The installed components are:

1. **MSSQL server.** The Microsoft SQL Server that stores configuration data and historical plant data.
2. **VisXpert.** The system responsible for collecting the process data and displaying it in the Scada process images. It also provides tools for editing the settings of process images.
3. **BatchXpert:** These are the files required for the BatchXpert process control system.

Under the "Tools" tab you can find other useful apps that are optional but useful.

2 Requirements

BatchXpert and the VisXpert Scada System in general have modest hardware and software requirements. For more details, please refer to the "System Requirements and System Update" manual, which is included in the BatchXpert Software Development kit.

Hardware (the following indicate recommended features, not minimums):

- 1920 x 1080 (Full HD)
- Core I5 or better
- 4 GB RAM or better
- 250 GB hard drive or SSD

Software

- Windows 11 (Recommended)
- Windows 10
- Windows 8 or 8.1

In order to perform the installation, you must have Local Administration rights on the device where the Software is installed! You must have a username and password to perform the installation. If you do not have this information, please consult your device administrator.

3 Installing SQL Server

Installing MS-SQL, automatically creates and configures a new SQL Server instance with the name: Server Name\GraphPic

By default you can connect to this server with the "Windows Authentication" button.

4 Installation of the "VisXpert" SCADA system

The files required for the installation of the VisXpert System can be downloaded through the installation center or from the website of the company MLogics.

The Company's website is: <https://docu.mlogics-automation.com>

The system requires a license obtained from your vendor or directly from MLogics. The license is described later in this document. The license is unlimited as to the number of tags, PLCs, images, or any other restrictions.

The license-free SCADA system feature in "DEMO" mode that allows you to run projects for a period of one hour, without editing. After this period you have to restart the VisXpert continue for another hour.

5 Install the BatchXpert

The BatchXpert has an installer that can be obtained from its supplier or directly from the company MLogics.

You can download the installer from the link: <https://docu.mlogics-automation.com>

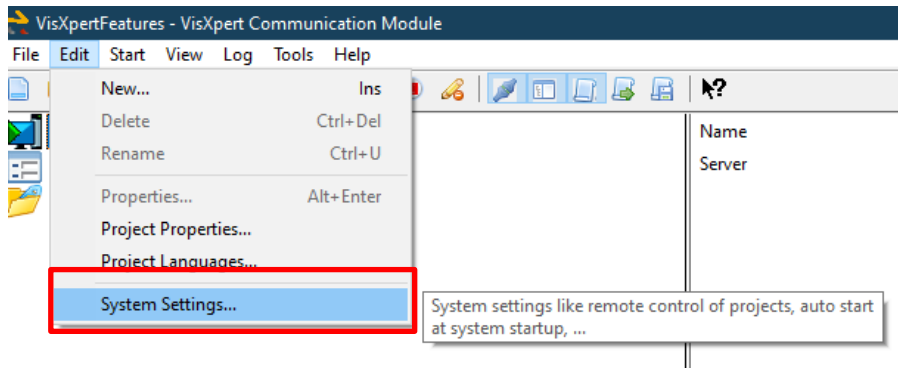
The installer will install the basic files and programs for the BatchXpert system. This Installer requires an installation of the previous VisXpert SCADA system.

During installation, follow the instructions on the screen.

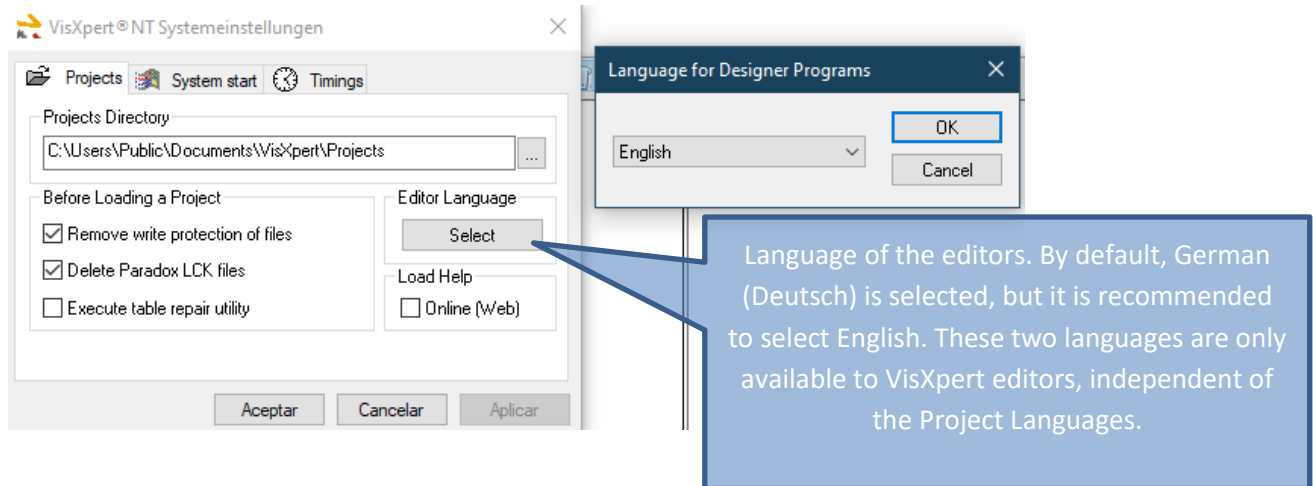


6 Adjust VisXpert Language

After launching the VisXpert Communication Module (Kommunikationsmodul), open the following menu:



In the dialog that opens, you can adjust the following items:



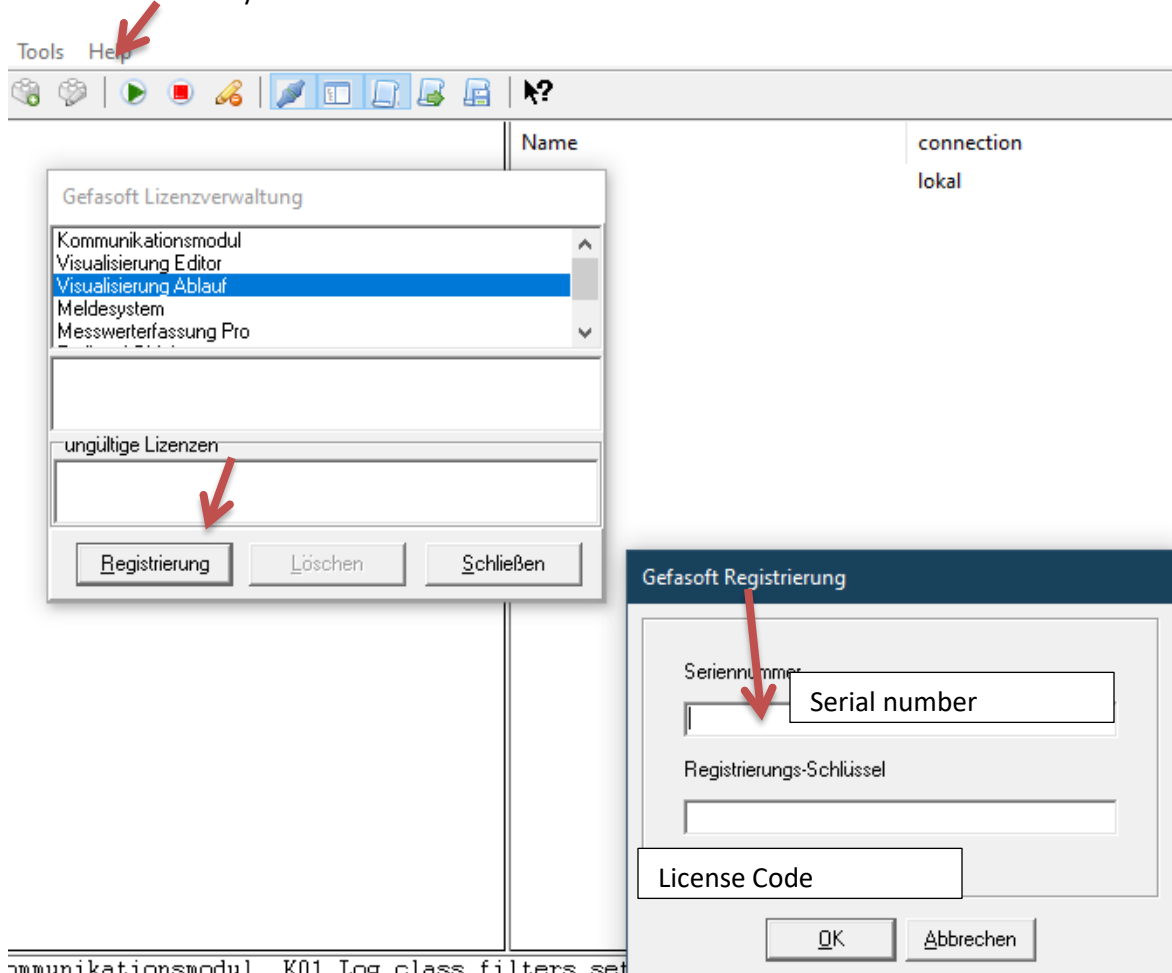
7 Install the license

When everything is installed, you can start the program via the start menu entry "VisXpert". First the system indicates that there is no license, and therefore the "Demo" mode will start. Demo mode doesn't have any restrictions on functionality, but VisXpert will restart every hour, until a valid license is installed. The Demo mode is a good solution to test the system and get to know it.

To install the license.

1. **Launch the VisXpert "Kommunikations Modul" with Administrator privileges**
2. First open the "Help/License Info" menu
3. Then open the window with the "Registrierung" button

At the next sale they have to enter the license number.



These licenses, of course, only have to be installed on the plant's computers! The license is not installed on the test computers, and the system is left in "Demo" mode.

After entering the license, one should close the VisXpert and eventually restart it.

Licenses can be obtained from the license certificate, which you obtain from your provider.
"Seriennummer" is the serial number and "Reg.-Schlüssel" is the license code.

1. Lizenz

Reg.-Schlüssel: [REDACTED]

Seriennummer: [REDACTED]

2. Lizenz

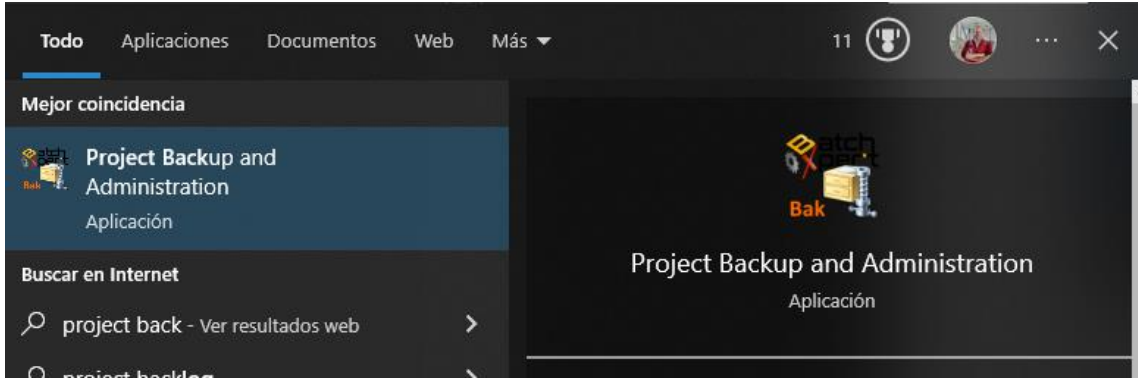
Reg.-Schlüssel: [REDACTED]

Seriennummer: [REDACTED]

8 Install the project files

After installing the basic BatchXpert system Applications, a project-specific backup needs to be restored. These backups have the file extension ". * Bxbak" can be restored and created by the "BatchXpert Backup Project & Administration" tool.

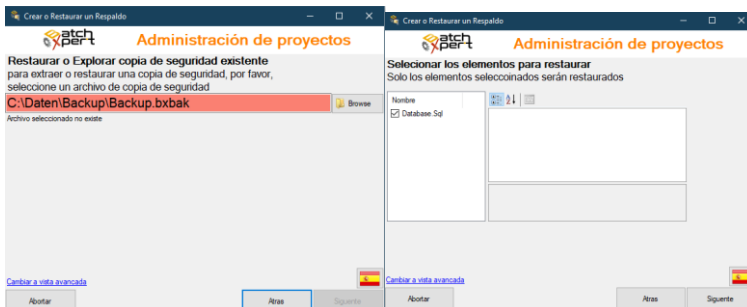
This tool allows you to restore all configuration and project files with an easy-to-follow user interface. To restore a backup, launch the app with "



administrative privileges" in the start menu.



Follow the user interface and select the backup file to restore.



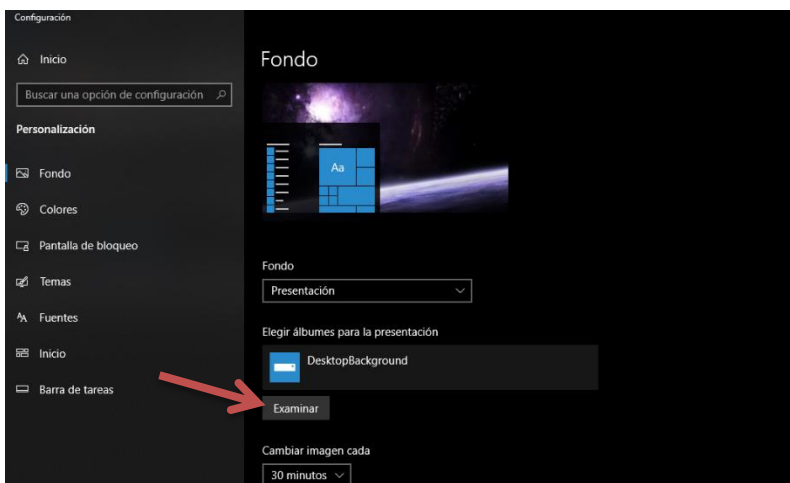
9 Settings in Windows

After the installation of SCADA, BatchXpert and Project, some adjustments must be made to the Windows system itself.

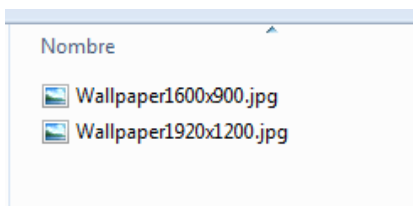
However, these settings are optional, but highly recommended.

9.1 Change Desktop Background

First, the Windows desktop background needs to be changed. This is done with a right click of the mouse to a free space on the desktop. In the menu, choose the "Customize" option and in the dialog that appears, choose "Desktop Wallpaper. The image must be chosen in the "BatchXpert\Resources Installation Folder" folder ("BatchXpert Installation Folder" refers to the folder where the BatchXpert was previously installed).



A "WallpaperZZxZZ" file should be chosen that corresponds to the resolution of your current screen. If there is no file that corresponds to your screen resolution, the file closest to the current resolution should be chosen.



9.2 Create and Adjust System User

To prevent system settings from being changed, due to ignorance or for other reasons, Windows systems from version 7 onwards allow you to adjust a user with limited authorizations on the system. Basically, the system separates between two types of users. "Limited Users" and "Administrators". By default, the user who deals directly after Windows installation is set to "Administrator".

Basically, you have to make a new user account with administrator privileges, and then limit the privileges of the initial account to "Limited User".

To perform this operation, the following steps must be followed. All of the following operations are executed in the "Control Panel" in the "User Accounts" section. With this link you can open directly: "Control Panel\User Accounts & Child Protection\User Accounts"

9.2.1 Create new user account

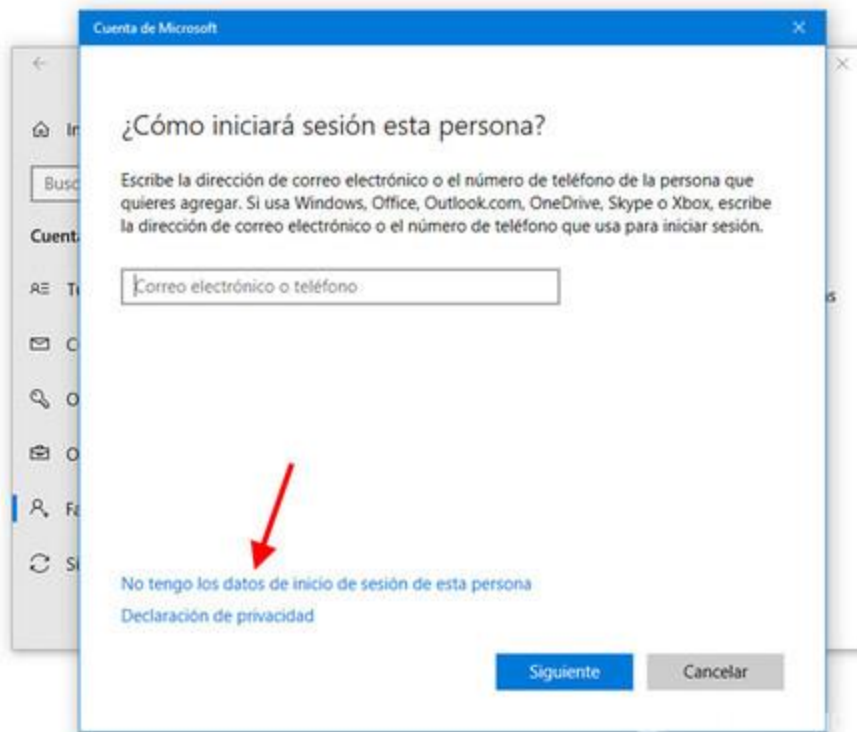
First, open the Start Menu and click on the **Settings icon**.



In the Windows settings elements you must click on the **Accounts section**, because this is where you can do all the procedures such as creating new accounts, both with and without a Microsoft account.



Once in the accounts section, click on the **Family & Other People** tab (1) to go to the section where you can add accounts. Then, scroll down to the **Other People** section and click **Add someone else to this team**.




Now is when the important part comes, instead of typing a Microsoft email account, click **I don't have this person's login details**. The name seems to suggest otherwise, but here's how to create a new Microsoft account... or set up a new local account.

Creemos tu cuenta

Windows, Office, Outlook.com, OneDrive, Skype, Xbox. Todos estos servicios ofrecen una mejor experiencia más personalizada cuando inicias sesión con tu cuenta de Microsoft.* [Más información](#)

[Obtener una nueva dirección de correo electrónico](#)

*Si ya usas un servicio de Microsoft, vuelve atrás para iniciar sesión con esa cuenta.

[Agregar un usuario sin cuenta Microsoft](#)

Siguiente 

[Atrás](#)

Now you should also pay attention because instead of filling out the form, which would create a new Microsoft account, you must click on the text **Add a user without a Microsoft account**.

Crear una cuenta para este equipo

Si quieres usar una contraseña, elige algo que te resulte fácil de recordar, pero que sea difícil de adivinar para los demás.

¿Quién va a usar este PC?

Dale seguridad.

Siguiente 

[Atrás](#)

Now, finally, you can add your username as a local account. You must enter a **username and password**, which you will need to enter twice. You will then need to enter secret questions and answers to be able to recover your account if you forget your password.

After setting a password, the account picture must be adjusted. With a click on the "Change Image" option you can choose an image as an image for the account. For the "Admin" you must select the following image:

"BatchXpert\Resources\Admin Installation Folder Logo.jpg"

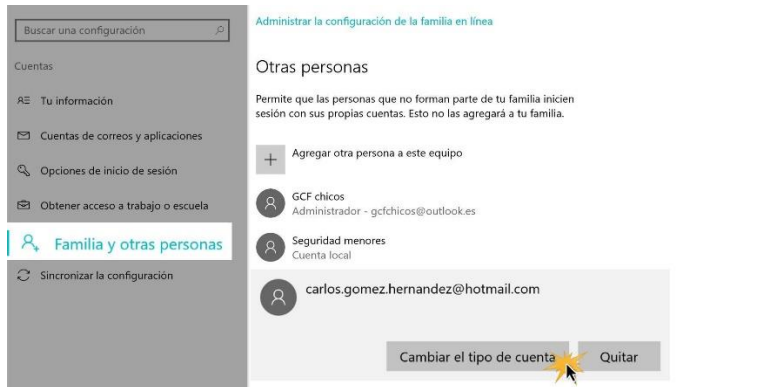
("BatchXpert Installation Folder" refers to the folder where BatchXpert was previously installed.)

9.2.2 Change your initial account

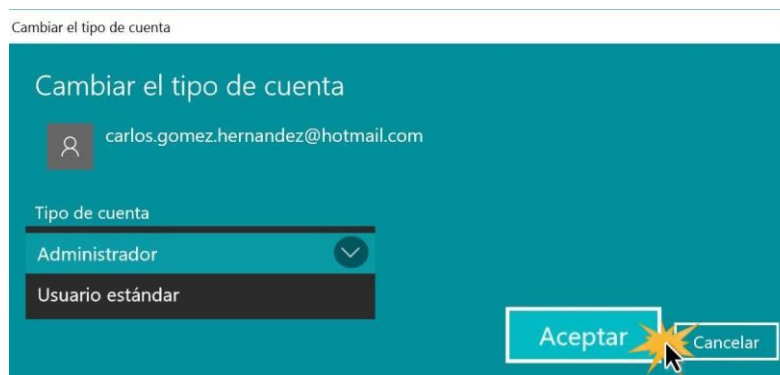
After creating a new "Administrator" who is protected by a password to prevent access to sensitive system settings, the initial system account can be limited.

To do this, the initial operator (which should be called "BatchXpert Station") must be selected from the list of users in the user account management menu.

On the left side of the screen, click **Family & Other People**. On the right side of the window, you'll see the entire account that the team has. Click on the account you want to modify and select **Change account type**.



Click the drop-down arrow and choose whether you want the account to be **Admin or Standard User**, then select **OK**.



After setting a password, the account picture must be adjusted. With a click on the "Change Image" option you can choose an image as an image for the account. For the "Admin" you must select the following image:

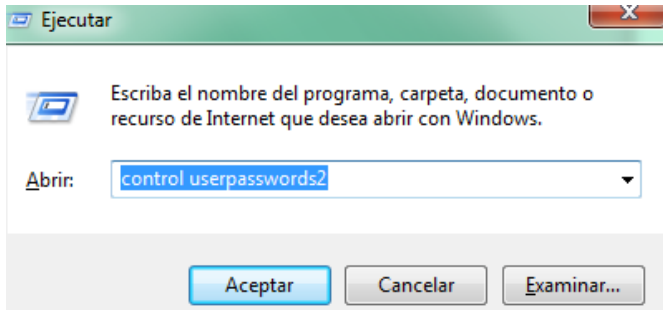
"BatchXpert\Resources\BatchXpert Installation Folder Logo.jpg"

("BatchXpert Installation Folder" refers to the folder where BatchXpert was previously installed.)

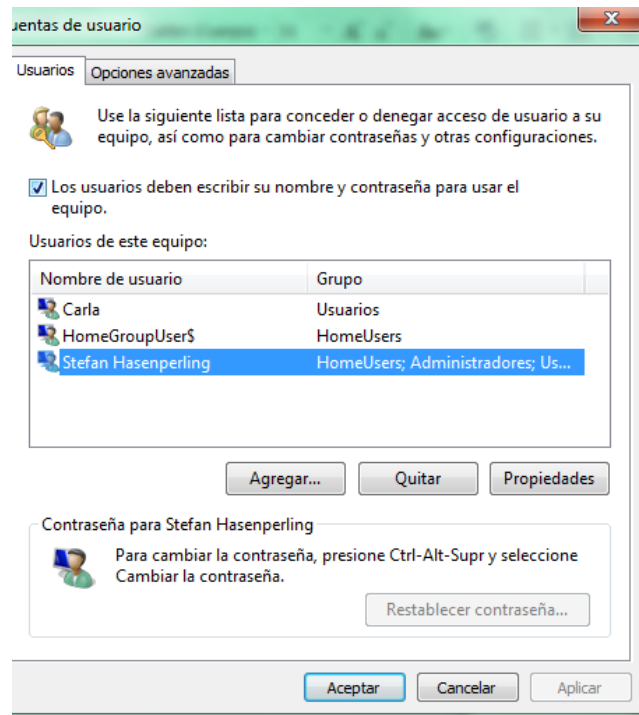
9.2.3 Set Account to Automatically Log in to Windows

It is recommended that the user is set by default, so that he/she automatically enters the Windows, without the need to log in to the Windows.

1. First press the "Windows + R" key to open the run dialog and enter "Control Userpasswords2", confirming with "Enter"



1. The advanced account settings manager opens. In it, you must select the account you want to set as automatic login and deactivate the ticket: "Users must enter their name and

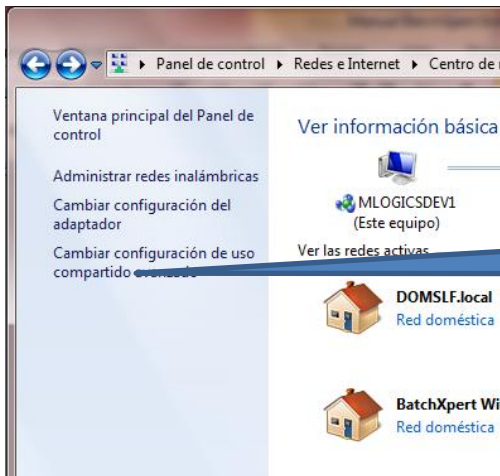


password to use the computer.

Thus, Windows will start without the need for any user to log in.

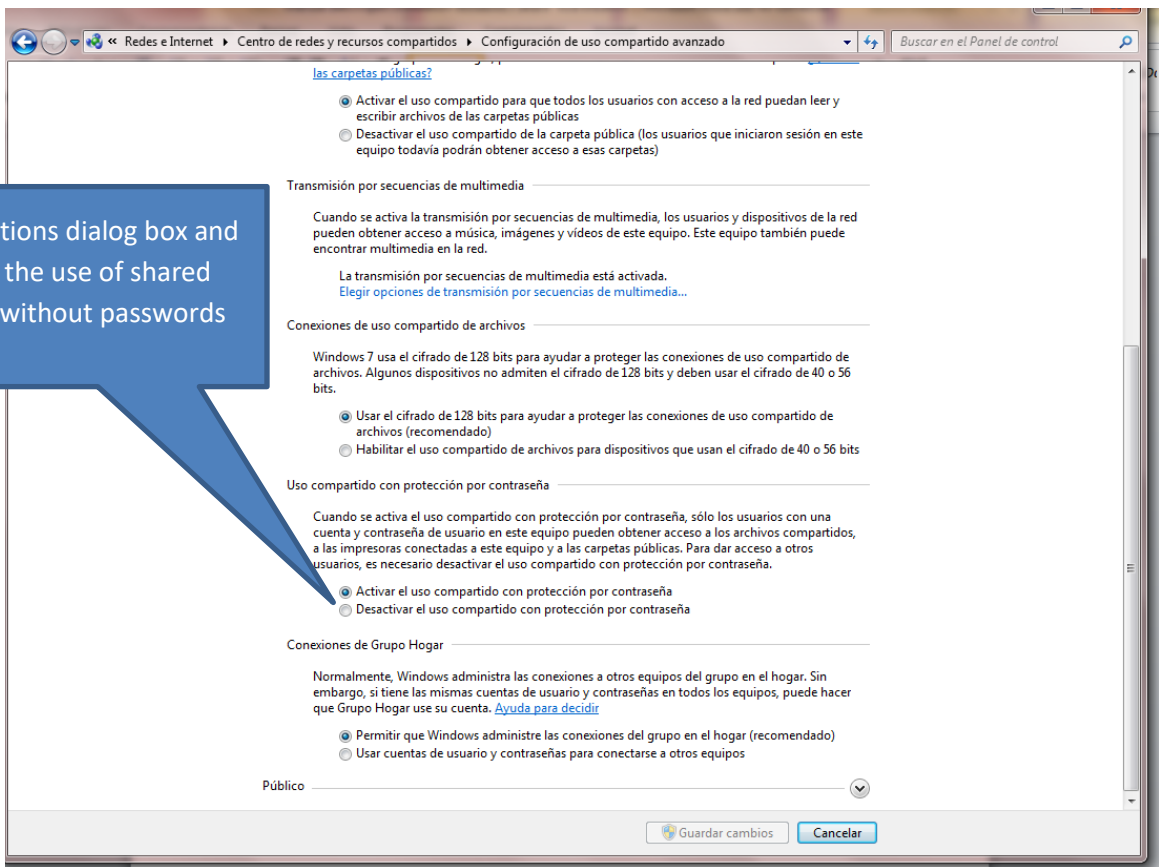
9.3 Turn off Windows Sharing Restrictions for user "without" password

Since by default the BatchXpert user station does not have any password set, windows can lock remote folder access to shared folders by default. To disable this behavior open the Control Panel, select "Networks & Internet", "Networks & Shares" and adjust as follows:



Open Advanced Options

In the Options dialog box and enable the use of shared folders, without passwords

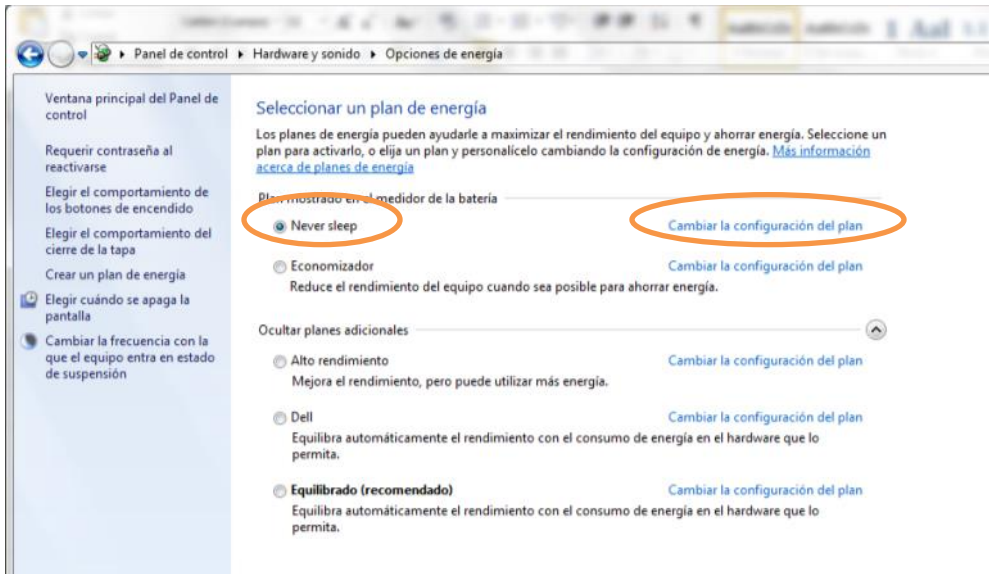


10 Adjust "power management" settings

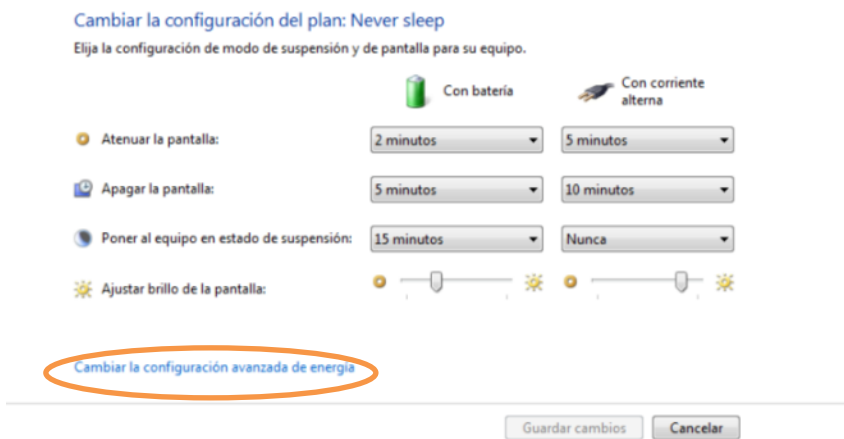
It is highly recommended that some power management settings be adjusted for better performance and to avoid problems with the system.

This setting is optional, but highly recommended to adjust under "Operating Stations". These settings should not be adjusted in "Dev Stations".

To open Windows power management settings, open the "Control Panel" and go to "Power Management."



Under the selected "Plan", select "Change & Configure". This opens up the basic settings of the feed management plan.



In this window, click "Change Advanced Settings" to open Advanced Settings. The settings that need to be adjusted are as follows:

A BatchXpert station must run all times in order to record trend graphs and batch events. At some stations, however, the window system spins down the hard drive after the station was using it for

a set period of time. Next, the operator returns to the station, the hard drive must be booted again, resulting in a "PC seemingly frozen for a short period of time". To avoid this, he has to disable the automatic shutdown of the hard drive.

To turn hard drive spin down, open the "Hard Drive" section and the "Shut Down Later" subsection.

These values should be set to "0", so that the hard drive never shuts down.

