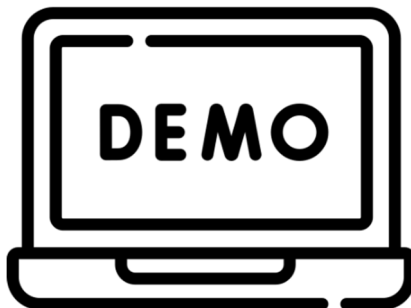




Set up Demo



Contents

- 1 Preface..... 2
- 2 PLC..... 2
- 3 Download and Install BatchXpert..... 2
- 4 Download and Install the Demo Project Files 3
 - 4.1 Select Demo Project as Current Project 3
 - 4.2 Starting Project 3
 - 4.3 Login and Default settings 3
 - 1. Open the PLC Configuration 4
 - 4.4 Preparing PLC program 5
- 5 User Logins 6

1 Preface

This Manual tries to explain the installation procedure of the BatchXpert Demo Project. This Demo Project presents the features and capabilities of the BatchXpert Process control System.

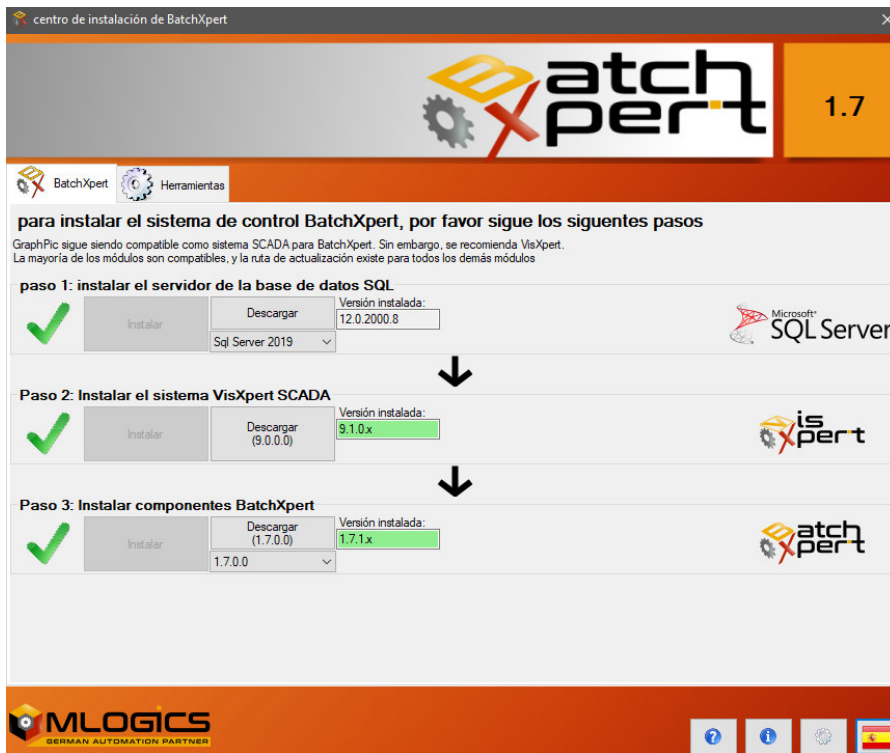
2 PLC

The BatchXpert System requires a Siemens S7 compatible PLC where the PLC Program can be executed and that is connected to the PC Demo Station by means of an Ethernet communication. It is also possible to use the “PLCSim” Siemens PLC Simulator application that is delivered with the Step7 Programming Software from Siemens.

3 Download and Install BatchXpert

All needed files for the BatchXpert System are automatically downloaded from the Web installer available at the Mlogics Homepage in the “Member Download” area from the following link:

<http://www.mlogics-automation.com/MLogics/Install%20Center/BatchXpert%20Installation%20Center.exe>

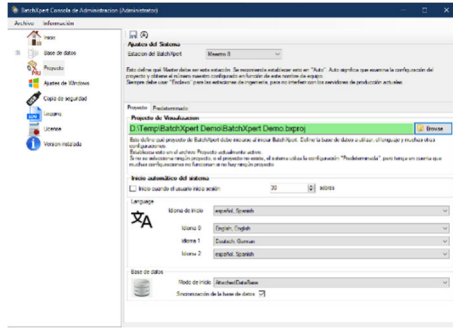


After starting the Web installer, please follow the instructions from the installers and install all four BatchXpert Components (SQL-Server, GraphPic 8, GOPS PLC Driver and BatchXpert)

4 Download and Install the Demo Project Files

After the BatchXpert System installation, the Demo Project files must be extracted into any directory. This Project directory contains all files for the PLC Program, SCADA and database.

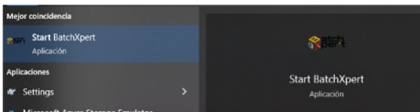
4.1 Select Demo Project as Current Project



To start the project, you should first select the project to be started in the “BatchXpert Management console”. Start this Application with Administrator Privileges.

Under the option “Project” on can select to corresponding project file from the extracted directory. The other settings should be left as is.

4.2 Starting Project



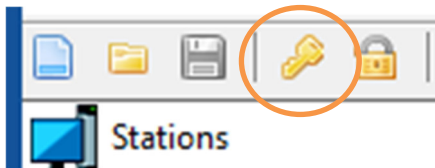
After that the project can be start by clicking on the “Start BatchXpert” option, found in the sindows start menu and on the Desktop.

4.3 Login and Default settings

Once the Project is opened a Login is required to be able to edit any of the projects configurations. The adjusted default Login for this Demo Project is:

User Name: Admin
Password: (empty password)

The Login Dialog can be opened by clicking on the Login Button of the “Communication Module”

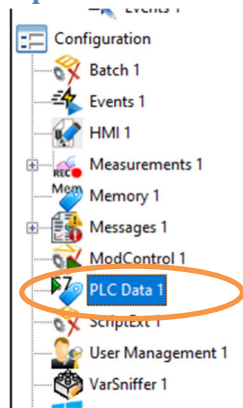


After successfully logging in, the PLC connection settings must be adjusted. By default the driver of the Demo Project is adjusted to the IP Address:

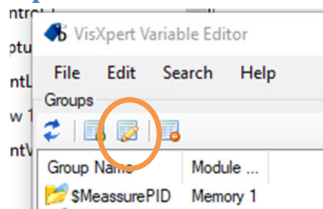
192.168.0.11

If another address is required one must follow the following procedure.

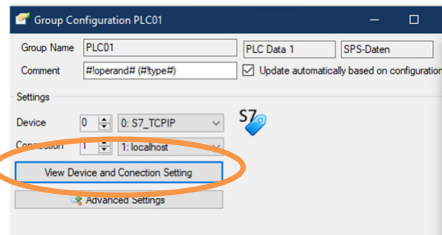
1. Open the PLC Configuration



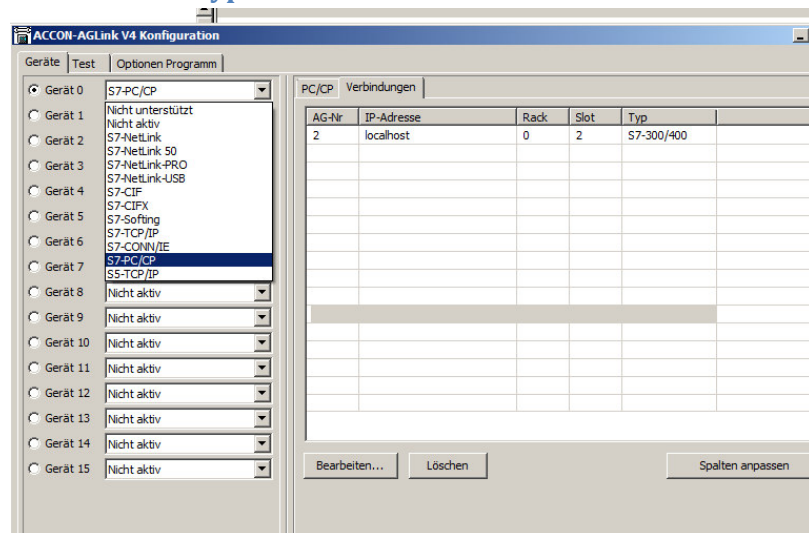
2. Open the Connection Settings



3. Open Driver Settings



4. Select Driver Type

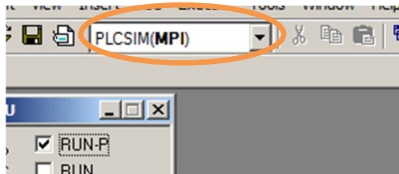


On this dialog one can select a PLC Driver type that will be used for connection to the PLC. If a real PLC or a SoftPLC with Ethernet is used one should select the “S7-TCP/IP” settings. If the PLCSim is used one must select the “S7-PC/CP” setting.

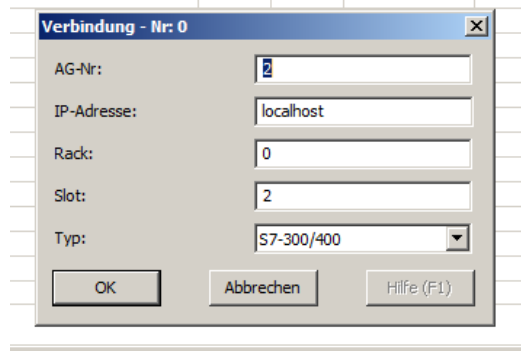
5. Configure the PLC Connection

In the Tab Page “Connections” one can configure the necessary settings for the driver. If an “S7-TCP/IP” driver is used only the “Slot” and “IP-Address” are important.

If the **PLCSim** Software is used, make sure that “S7-PC/CP” is selected. The easiest way of communication with the PLCSim is by using the “MPI” method. This means that the PLCSim must be started and the communication option “PLCSim (MPI)” must be selected.



In the tab page “Connections” the adjustment must be as follows. The “AG-Nr” corresponds to the MPI Address of the PLC.



4.4 Preparing PLC program

The BatchXpert System uses a Siemens S7 compatible PLC for execution of its process and control module logic. Basically one can use any S7 compatible PLC available, be it a real PLC (e.g. Siemens S7-300 or Vipa 300), a Soft PLC (Siemens WinLC, IBH Soft PLC) or the Siemens PLCSim simulation PLC.

It does not matter which PLC is used, as long as it is reachable by the PLC station by means of any of its integrated Drivers. It is recommended using a connection based on Ethernet.

Downloading the PLC software of the BatchXpert Demo should be done by using the Simatic Manager PLC programming tool from Siemens. The procedure of downloading the application into the PLC will not be covered by this manual, since it is a well-known standard procedure.

5 User Logins

The default users for the BatchXpert Demo Project are as follows:

User Level user:

User name: operator

Password: operator

Service Level user:

User name: Service

Password: service

Admin:

User name: Admin

Password: (empty password)