



“BatchXpert, process management system used and adapted for all types of processes”

BatchXpert automation system

Developed with the most advanced technologies and aimed at satisfying the most complex needs of today's industry in the area of process control.

MLogics is the company in charge of developing the system, it was founded by German professionals.

The system **BatchXpert** It is a control and visualization system plant-wide processes, incorporates batch reporting, protocols and recipes, batch tracking with materials, trends, alarms, BatchXpert station and/or HMI, etc...

For simpler applications there is the system **BatchXpert Compact** which is a system for processes that do not need protocol reports. batches or recipes, but it incorporates trends and a history of alarms, an HMI, etc...

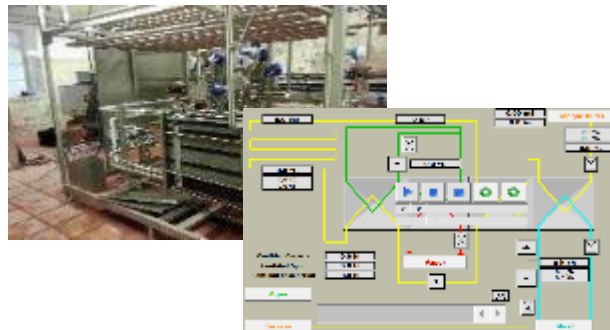
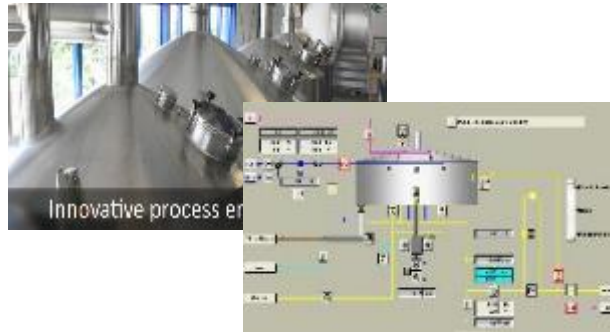
About us

About us

We are an Automation Company with more than 20 years of experience in the production processes of food industries and other types of industries.

Our contact

Telephone: +56 9 719 256 91
Email: Stefan.Hasensperling@MLogics.de
Web: www.Mlogics-Automation.com



OUR OFFICES:

MLOGICS CHILE LIMITADA

76.239.183-K
Palma Caranday 618
Peñaflor,
Santiago

MLOGICS SRL URUGUAY

Mirsoles M.127 S.21
Solymar Mountains
Montevideo



Chart tracking materials that were used in a recipe or batch.

BatchXpert Tools

- **Batch Report View:** allows you to search, print and trace the different batches and materials used in each recipe, unlike other companies, the BatchXpert system records all the interventions that were carried out, from manual operations to parameters
- **FailSave:** The system is designed to provide the greatest possible operational security. All workstations in the system are independent and can work for the entire plant. All databases are replicated to all Stations in the system. There is no central point of failure.
- **Batch Configurator:** allows you to edit and configure all the steps that the system can execute, and also assign the different recipes to each step.
- **Material Configurator:** allows you to edit, add and delete all the materials that are used in the system.



“BatchXpert is a professional process control system, very complete, easy to use and expandable.”

Historical and automatic and adaptable reports

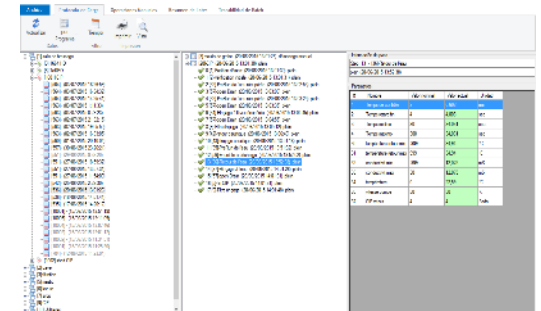
Process protocols are essential today, to manage with maximum efficiency and responsibility the different factors that influence production.

We have incorporated data work modules, where the client can evaluate and interact with the different records, in addition to being able to print the required data.

The BatchXpert protocol system is designed so that the protocol is registered with the greatest security, providing great reliability in data protection. Unlike other BatchXpert systems, it has the ability to retain and remember data in the event of a failure or lack of connection between the PC and the PLC through a dynamic buffer.

Proven technology

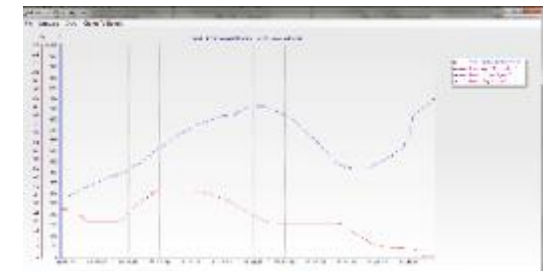
System HMIs incorporate a library of system windows and standardized control symbols for a consistent look and feel across all process images.



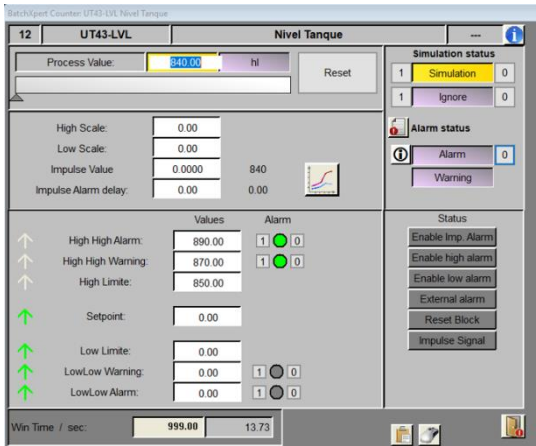
Batch Report View, in this image we see the record of each batch.

Adaptable, expandable and easy to use

The “BatchXpert Compact” system was created as an automation system for simpler applications, optimized for touch screens. The “BatchXpert Compact” system is completely based on the technology of the “BatchXpert” process management system, and incorporates many functions of the “BatchXpert” system and is compatible with this and other systems.



Value trends are recorded in the BatchXpert station and in the HMI.



Variable configuration image, this allows autonomy with respect to system intervention

Control Modules

The “BatchXpert Compact” system incorporates the control modules of the “BatchXpert” system and thus has the same functions and control standards. The parameters of all modules are completely configurable from the HMI.

The system incorporates, among others, modules for

- Actuators (Valves, Motors,...)
- Digital inputs (Sensors, buttons,...)
- Analog inputs (Measurements, process values.
- PID regulators....

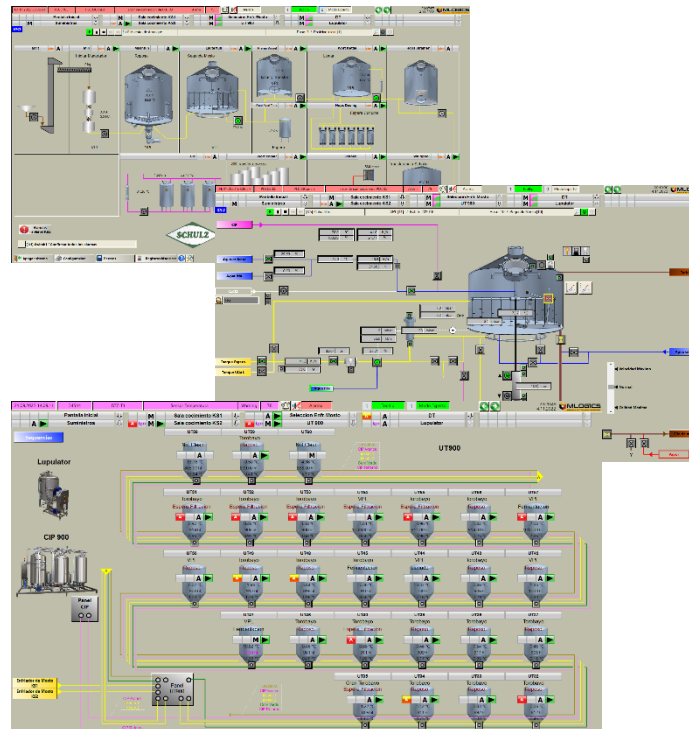
Trends and alarms

The system incorporates functions for trends and alarm lists in all its HMIs, with these records, it is easier for the user to evaluate the processes of the automated application and thus optimize the process parameters.

“The BatchXpert compact is an ideal system for small applications and machinery, as it incorporates parts of the BatchXpert.”



Multi-monitor operation



Process	Unit	Status	Limit
Tercera de control	100	OK	0.0000
Segunda de control	100	OK	0.0000
Primera de control	100	OK	0.0000
Alimento inicial	100	OK	0.0000
Alimento final	100	OK	0.0000
Alimento medio	100	OK	0.0000
Alimento superior	100	OK	0.0000
Alimento inferior	100	OK	0.0000
Alimento medio superior	100	OK	0.0000
Alimento medio inferior	100	OK	0.0000
Alimento superior superior	100	OK	0.0000
Alimento superior inferior	100	OK	0.0000
Alimento inferior superior	100	OK	0.0000
Alimento inferior inferior	100	OK	0.0000
Alimento medio superior superior	100	OK	0.0000
Alimento medio superior inferior	100	OK	0.0000
Alimento medio inferior superior	100	OK	0.0000
Alimento medio inferior inferior	100	OK	0.0000
Alimento superior superior superior	100	OK	0.0000
Alimento superior superior inferior	100	OK	0.0000
Alimento superior inferior superior	100	OK	0.0000
Alimento superior inferior inferior	100	OK	0.0000
Alimento inferior superior superior	100	OK	0.0000
Alimento inferior superior inferior	100	OK	0.0000
Alimento inferior inferior superior	100	OK	0.0000
Alimento inferior inferior inferior	100	OK	0.0000

Sequence that the system will follow in each program

Managing sequences with recipes

This system incorporates sequences that execute programs with steps, which can be completely configured from the HMI.

It is possible to create several programs or “recipes” for each sequence. In this way it is possible to create several programs for the same process with different values of the process.



BatchXpert is compatible with the latest generation of logic controllers.

The BatchXpert system supports the default Periphery Quantity, which are:

- 120 Units (Sequences)
- 1600 Actuators (Motors, Valves,...)
- 1600 Digital Inputs (Initiators, Vacuum sensors,...)
- 480 Analog Inputs (Temperatures, Pressures,...)
- 320 Counters (Flow Measurements)
- 320 Regulators (PIDs) ;
- and several more Modules...

Its TQuantities can be expanded according to the needs of each client.



The BatchXpert is compatible with Siemens, that is why we use their products, such as PLC, Power supplies, SIMATIC manager, etc.

Modern and expandable system

The system is perfect for controlling processes and machinery, which require advanced historical data recording systems and process management functions such as those found in the “BatchXpert” system. The “BatchXpert Compact” system includes basic systems for recording historical data such as trends and alarm logs.

“Our system is as advanced and competitive as other systems on the market, such as the Botec system, Braumat, PCS 7, etc..”

BatchXpert compatibility with other systems.

- **Display:**For PC there is the GraphPic program (BatchXpert), for the HMI there is the Movicon Program, WinCC Flexible, Wein Tek (BatchXpert Compact), etc...
- **PLC:**at Siemens with PLC S7-300, S7-400, S7-1200; At Vipa we are compatible with your entire line of PLCs.
- **Others:**Team Viewer is used for teleservices (optional)



It is also compatible with manufacturers such as VIPA



For small applications the Siemens S7-1200 series can be used.



Process Image Engine for display on PC screen



BatchXpert, With VIPA HMI in a Tunnel Pasteurizer.

References

MLogics has a portfolio of first-class clients, with whom it has worked on the implementation of the BacthXpert system, BacthXpert Compact.

An updated list is available on our website:
www.mlogics-automation.com

International

Le Froid (Cola Coca), New Caledonia
Balashi Beer, Aruba
Munich, Paraguay
Bolivian Drinks, Bolivia
FNC, Uruguay
...



We have carried out projects in many areas of beer processes, Pisqueros, soft drinks and other food products.

Process: Brewing room, Fermentation, Filters,...

Packaging Room: Fillers, Transports, Pasteurizers, Packers,...

Supply: CIP, Steam, CO2, Cooling, Water,...

Chile

CCU, Chile
Kunstmann, Chile
Austral, Chile
ABInBev, Chile
Chilean Pisquera Company
Trendy, Chile
...